

## VMC or RVMC Controller Identification

To determine what controller is installed in a particular machine there are several clues to follow.

**Old style VMC** boards (Fig. 1) have firmware that begins with v.2.xx. Power cycle the machine and view the machine display to see firmware installed or, when looking at the controller the service mode button is on the left or, there is large rectangular block with “DALLAS” written on it. If any apply, you have an old style board.

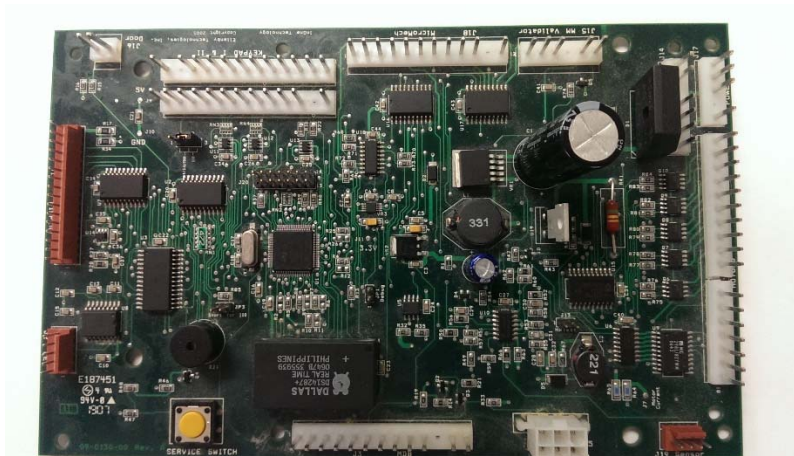


Fig. 1

**New style RVMC** boards (Fig. 2) have firmware that begins with v.3.xx. Power cycle the machine and view the machine display to see firmware installed or, when looking at the controller the service mode button is on the right or, there is a red switch block with 6 white switches. If any apply, you have a new style board.

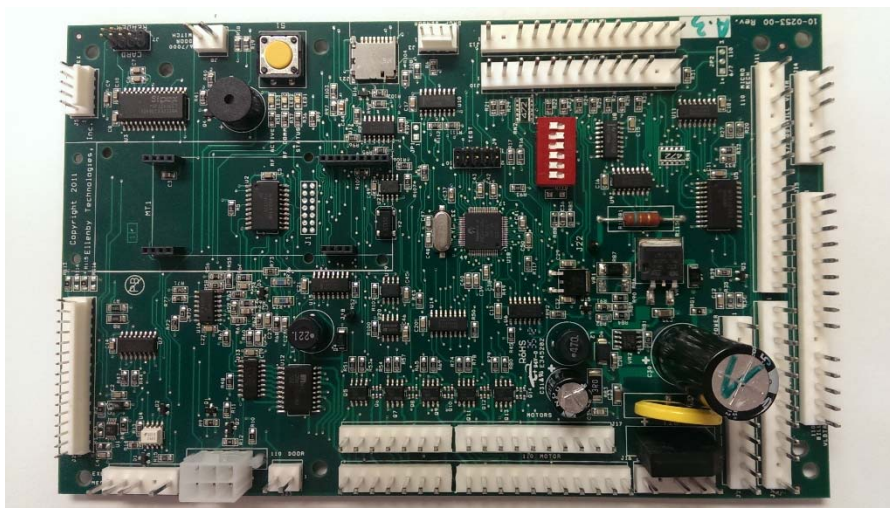


Fig. 2